

AAMS

(Automatic Assignment Management System)

Group 21

Ajanth Thangavelu

Roberto Castañeda Lozano

Tony Karlsson

Love Jädergård

Design document

Contents

4. Graphical User Interface	3
4.1. Overview of the User Interface	3
4.2. Screen shots	4
4.3. User Interface description	7
4.4. Major reports description	11

4. Graphical User Interface

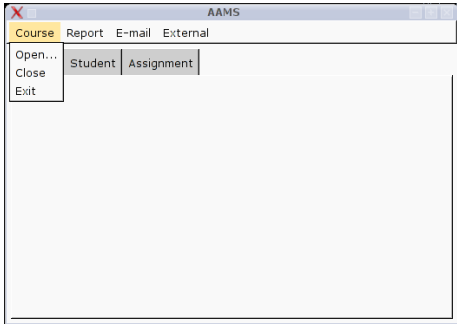
4.1. Overview of the User Interface

The graphical user interface in the program is organized in a single window with three different tabs and a menu in the top of the window.

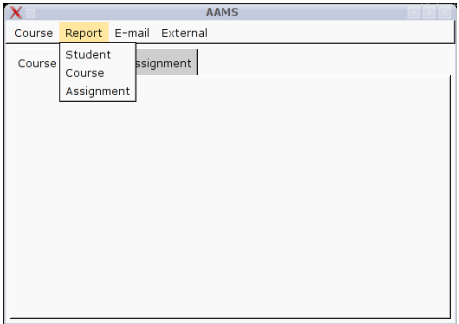
The three tabs are *Course*, *Student* and *Assignment*. In the *Course*-tab the general information about the course is presented such as the course name, course code and e-mail of the teacher. These general information fields for the course is editable. In the *Student* tab and the *Assignment* tab the user can show and edit the information about students and assignments. The *Student* tab contains a list of students for the course and the user is presented with two buttons, one for editing the properties of a student and one for viewing the assignments for a student. The *Assignment* tab contains a list of all the assignments in the course. In this tab there are also two buttons, one for editing the assignment called *Edit properties* and one for viewing the assignment for each student called *View assignment*. In the edit dialogs that will pop up when the user presses *Edit Properties* in the *Student/Assignment* tab, this will have the option to edit the grade and add comments for students/assignments.

In the top of the window there is a menu with with four items: *Course*, *Report*, *E-mail* and *External*. In the *Course* menu the user can open and close different courses handled by the system. Opening another course will present the data for that course in the three tabs in the main window. In this menu there is also an *Exit* item that will terminate the program. The second menu is the *Report* menu which will create a report of either the students, the courses or the assignments. The next menu is the *E-mail* menu which contains the *Download* and *Send* items. The *Download* item will download all the e-mails sent to the system to the specified e-mail address. The *Send* item will send all the comments to the users by e-mail. The last menu is the *External* menu which will handle the communication with the external systems such as *RES*.

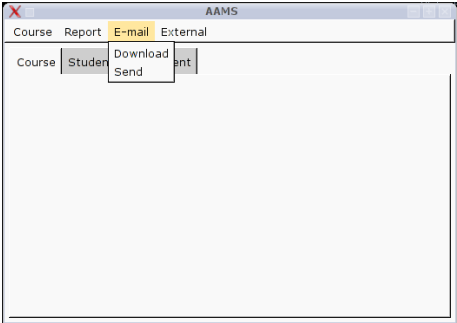
4.2. Screen shots



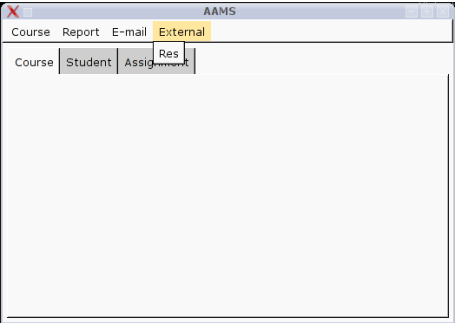
(a) Course menu



(b) Report menu

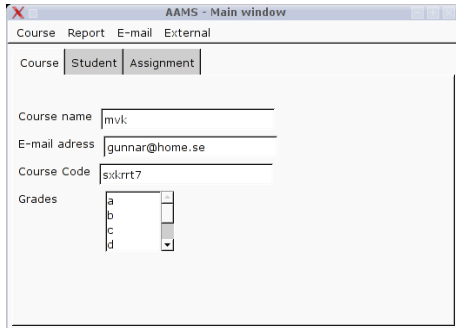


(c) E-mail menu

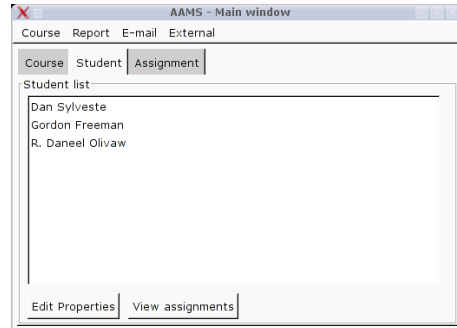


(d) External menu

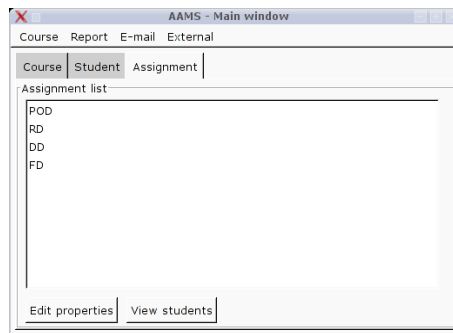
Figure 1: Screen shots showing the different menus



(a) *Course tab*

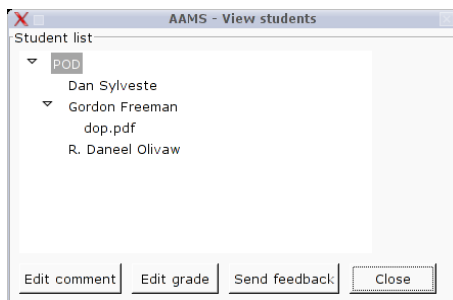


(b) *Student tab*

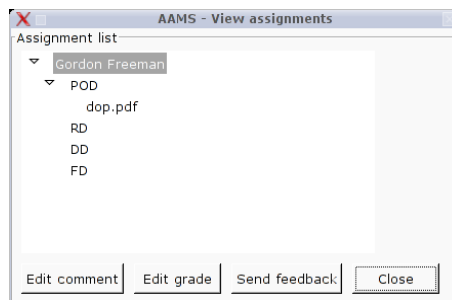


(c) *Assignment tab*

Figure 2: Screen shots showing the three main tabs



(a) *View students form*



(b) *View assignments form*

Figure 3: Screen shots showing the *View students* and *View assignments* forms

AAMS - Edit assignment properties

Name

Date

Expected files

(a) *Edit assignment properties* form

AAMS - Edit student properties

Name

E-mail

(b) *Edit student properties* form

Figure 4: Screen shots showing the properties edition forms for assignments and students

AAMS - Edit comment

The POD should be named "pod.pdf" unless your crowbar is broken. Then it should be named "spagetti monster from space.pdf". This is clearly stated on the course web page.

(a) *Edit comment* form

AAMS - View message

Hi!
My crowbar is broken so I named the file dop instead of pod. I hope this is ok.

Gordon Freeman

(b) *View message* form

Figure 5: Screen shots showing the edition of comments and view of messages forms

4.3. User Interface description

Main window

This form will be displayed at the beginning of the execution of the application, from the *OnInit* method of the *wxWidgets* Application Class.

- **Menus:**

- **Course**

- * **Open...**

- A *click* event over this menu item will display a classical “open file” dialog box which will allow the user to select the course file to be opened.

- * **Close**

- A *click* event over this menu item will close the currently opened course file.

- * **Exit**

- A *click* event over this menu item will exit the application.

- **Report**

- * **Student**

- A *click* event over this menu item will generate a report from the list of students of the currently opened course.

- * **Course**

- A *click* event over this menu item will generate an overview report from the currently opened course.

- * **Assignment**

- A *click* event over this menu item will generate a report from the list of assignments of the currently opened course.

- **E-mail**

- * **Download**

- A *click* event over this menu item will start the process of connecting the specified e-mail server and download new received assignments from there.

- * **Send**

- A *click* event over this menu item will start the process of connecting the specified e-mail server and sending all the generated information (comments) concerning the course assignments.

- **External**

- * **RES**

- A *click* event over this menu item will run the RES plug-in communication process.

- **Tabs:**

- **Course tab**

- * **Course name text box**

- A *text change* event from this control will automatically update the course file.

- * **E-mail address text box**

- A *text change* event from this control will automatically update the course file.

- * **Course code text box**

- A *text change* event from this control will automatically update the course file.

– **Student tab**

* **Student list list box**

A *double click* event over an item from this control will display the *View assignments* form for the selected item.

* **Edit properties command button**

A *click* event on this control will display the *Edit student properties* form for the item selected in the *Student list* list box.

* **View assignments command button**

A *click* event on this control will display the *View assignments* form for the item selected in the *Student list* list box.

– **Assignment tab**

* **Assignment list list box**

A *double click* event over an item from this control will display the *View students* form for the selected item.

* **Edit properties command button**

A *click* event on this control will display the *Edit assignment properties* form for the item selected in the *Assignment list* list box.

* **View students command button**

A *click* event on this control will display the *View students* form for the item selected in the *Assignment list* list box.

View students form

This form will be displayed after a *double click* event on a student from the list of students of the *Student* tab which belongs to the main window.

• **Student list tree list box**

A *click* event on an assignment item (first level of the tree list) will fold down a second-level list of students who have submitted that assignment. A *click* event on a student item (second level of the tree list) will fold down a third-level list of files that belong to the specified assignment and student. A *double click* event on a file item will launch the proper external application in order to open it.

• **Edit comment command button**

A *click* event on this control will display the *Edit comment* form for the file item (third level) selected in the *Student list* tree list box.

• **Edit grade command button**

A *click* event on this control will display a dialog box that allows the user to introduce a grade for the student item (second level) selected in the *Student list* tree list box.

• **Send feedback command button**

A *click* event on this control will start the process of connecting the e-mail server and sending the edited comments for the assignments.

• **Close command button**

A *click* event on this control will just close the *View students* form and will give back the focus to the main window.

View assignments form

This form will be displayed after a *double click* event on an assignment from the list of assignments of the *Assignment* tab which belongs to the main window.

- ***Assignment list tree list box***

A *click* event on a student item (first level of the tree list) will fold down a second-level list of assignments that the selected student has submitted. A *click* event on an assignment item (second level of the tree list) will fold down a third-level list of files that belong to the specified assignment and student. A *double click* event on a file item will launch the proper external application in order to open it.

- ***Edit comment command button***

A *click* event on this control will display the *Edit comment* form for the file item (third level) selected in the *Assignment list* tree list box.

- ***Edit grade command button***

A *click* event on this control will display a dialog box that allows the user to introduce a grade for the assignment item (second level) selected in the *Assignment list* tree list box.

- ***Send feedback command button***

A *click* event on this control will start the process of connecting the e-mail server and sending the edited comments for the assignments.

- ***Close command button***

A *click* event on this control will just close the *View assignments* form and will give back the focus to the main window.

Edit assignment properties form

This form will be displayed after a *click* event on the *Edit properties* command button from the *Assignment* tab which belongs to the main window.

- ***Name text box***

A *text change* event from this control will automatically update the course file.

- ***Date text box***

A *text change* event from this control will automatically update the course file.

- ***Expected files list box*** A *double click* event from this control will add a new item in the list.

- ***OK command button***

A *click* event on this control will close the *Edit assignment properties* form and will give back the focus to the main window, saving the changes.

- ***Cancel command button***

A *click* event on this control will close the *Edit assignment properties* form and will give back the focus to the main window, discarding the changes.

Edit student properties form

This form will be displayed after a *click* event on the *Edit properties* command button from the *Student* tab which belongs to the main window.

- ***Name text box***
A *text change* event from this control will automatically update the course file.
- ***E-mail text box***
A *text change* event from this control will automatically update the course file.
- ***OK command button***
A *click* event on this control will close the *Edit student properties* form and will give back the focus to the main window, saving the changes.
- ***Cancel command button***
A *click* event on this control will close the *Edit student properties* form and will give back the focus to the main window, discarding the changes.

Edit comment form

This form will be displayed after a *click* event on the *Edit comment* command button from the *View students* and *View assignments* forms.

- ***Comment text box***
A *text change* event from this control will automatically update the course file.
- ***OK command button***
A *click* event on this control will close the *Edit comment* form and will give back the focus to the main window, saving the changes.
- ***Cancel command button***
A *click* event on this control will close the *Edit comment* form and will give back the focus to the main window, discarding the changes.

View message form

This form will be displayed after a *click* event on the *View message* command button from the *View students* and *View assignments* forms.

- ***Message text box***
This control is not able to generate any event.
- ***Close command button***
A *click* event on this control will close the *View message* form and will give back the focus to the main window.

4.4. Major reports description

UI Error reports reference to Use Cases:

- **1.1 Extensions**
 - 3a Message: "Invalid course name"
- **1.2 Extensions**
 - 3a1 Message: "Invalid location"
 - 4a1 Message: "Invalid format in file"
- **1.3 Extensions**
 - 4a1 Message: "Invalid assignment name"
- **2.1 Extensions**
 - 2a Message: "No files found!"
- **2.2 Extensions**
 - 3a Message: "Invalid login/pass"
 - Message: "Connection could not be established"
 - Message: "Connection timed out"
- **3.1 Extensions**
 - 3a1 Message: "Invalid file format"
- **3.3 Extensions**
 - 5a1 Message: "Invalid grade"
- **4.2 Extensions**
 - 2a1 Message: "Invalid login/pass"
 - Message: "Connection could not be established"
 - Message: "Connection timed out"
- **5.1 Extensions**
 - 3a1 Message: "Course was not found!"
 - Message: "Invalid course name"
- **5.2 Extensions**
 - 3a1 Message: "Student was not found!"
 - Message: "Invalid student name"
- **5.3 Extensions**
 - 3a1 Message: "Assignment was not found"

- Message: "Invalid assignment name"

- **6.1 Extensions**

- 1a1 Message: "Invalid course name"

- **6.2 Extensions**

- 2a1 Message: "No grades assigned"

- 4a1 Message: "Invalid course"