

**Res version 2**

**Group 24**

Erika Ekberg (eekeberg@kth.se)

Mattias Johansson (mattias4@kth.se)

Enault Adrien-Marie (enault@kth.se)

**11/02/2008**

## 5. Design Details

### 5.1 Class Responsibility Collaborator (CRC) Cards

<b>User</b>	
Keep track of the users: <ul style="list-style-type: none"><li>● Name</li><li>● KTH ID</li><li>● Personal security number</li><li>● Mail adress</li><li>● Status (like D-04 etc.)</li><li>● User access level</li><li>● List of courses</li></ul> Retrive this info from database	Database
<b>CreateUser</b>	
Update user details Display user details Update user acces level	User Database
<b>Administrate user</b>	
Update user details Display user details Update user acces level	Database User
<b>Database</b>	
Acts as an interface between objects and the SQL. Keep track of database adress.	User
<b>Assignment</b>	
Keep track of: <ul style="list-style-type: none"><li>● Type</li><li>● Name</li><li>● Due date</li><li>● URL</li></ul>	Database User

Update grades Display grades of users	
---------------------------------------	--

<b>MainMenu</b>	
-----------------	--

Display a menu	User
----------------	------

<b>Login</b>	
--------------	--

User authentication	User
---------------------	------

Create a user (session) object	MainPage
--------------------------------	----------

<b>Course</b>	
---------------	--

Keep track of:	Database
----------------	----------

- Teacher
- Coursename
- Course ID/code
- List of students
- List of assignments
- List of assistants
- URL
- If valid or not

User  
Assignment

<b>HTMLPage</b>	
-----------------	--

Providing framework page	MainMenu
--------------------------	----------

Database

User

<b>AdministrateUserPage</b>	
-----------------------------	--

Display a page with a form that handles user administration	MainMenu
---	----------

Database

User

<b>CourseCreationPage</b>	
---------------------------	--

Display a page with a form that handles course creation	MainMenu
---	----------

Database

	User
--	------

<b>ValidateCoursePage</b>	
Display a page with a form that handles course validation	MainMenu Database User

<b>UpdateCoursePage</b>	
Display a page with a form that handles course updates	MainMenu Databasese User

<b>JoinCoursePage</b>	
Display a page with a form that handles course joining	MainMenu Database User

<b>CreateAssignmentPage</b>	
Display a page with a form that handles assignment creation	MainMenu Database User

<b>UpdateAssignmentPage</b>	
Display a page with a form that handles assignment updates	MainMenu Database User

<b>GradeAssignmentPage</b>	
Display a page with a form that handles assignment grading	MainMenu Database User

**DisplayAssignmentPage**

Display information about an assignment

MainMenu  
Database  
User**ListStudentsPage**

Display a page with a form that handles listing of students

MainMenu  
Database  
User**ListCoursesPage**

Display a page with a form that handles course listing

MainMenu  
Database  
User**DisplayCoursePage**

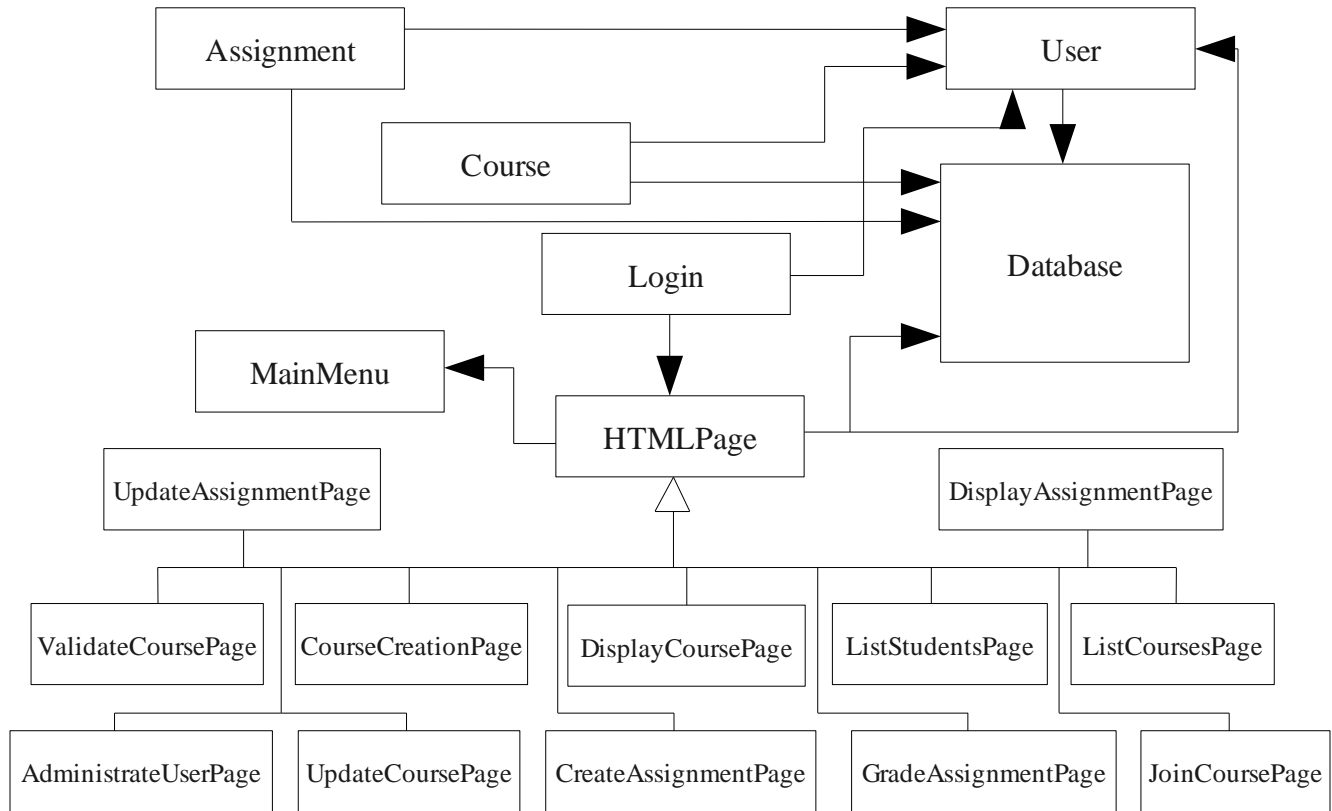
Display information about the course

MainMenu  
Database  
User**MainPage**

The first page the user see when he/she logs in.

MainMenu  
Database  
User

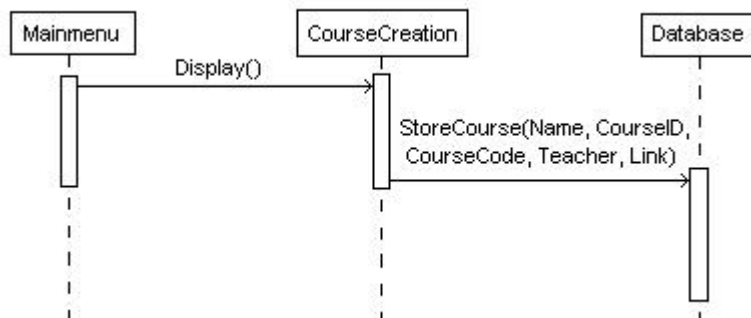
## 5.2 Class Diagram



## 5.4 Interaction Diagrams

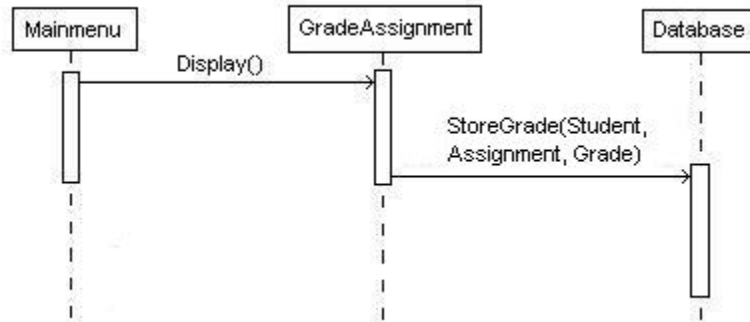
Add a course

References use case on page 20, Requirements Document.



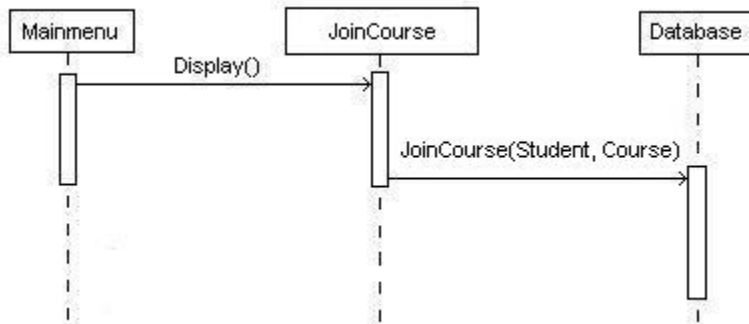
### Report a grade

References use case on page 21, Requirements Document

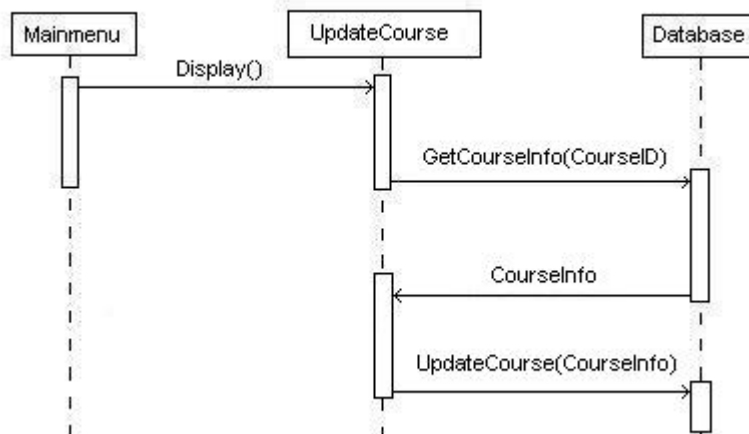


### Register in a course

References use case on page 23, Requirements Document.



### Update a course



## View course results

References use case on page 26, Requirements Document.

