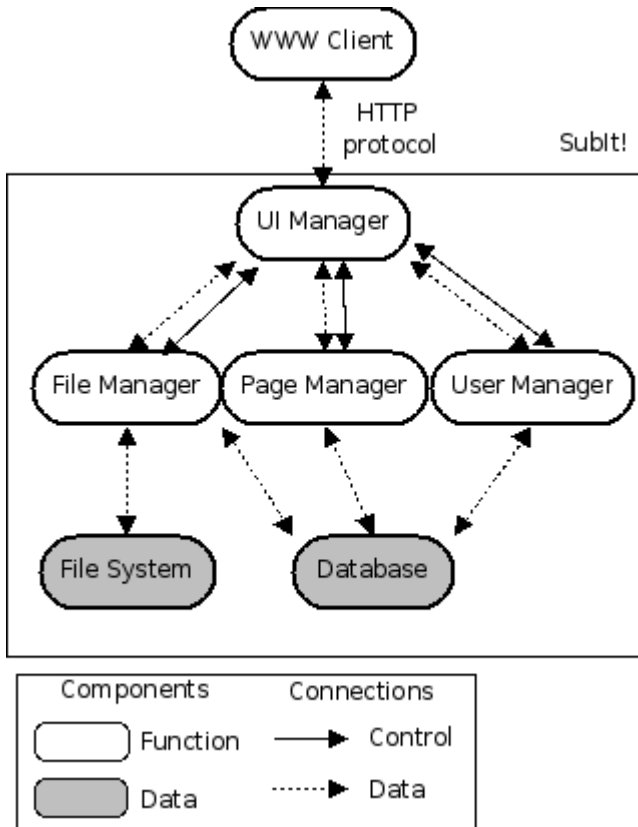


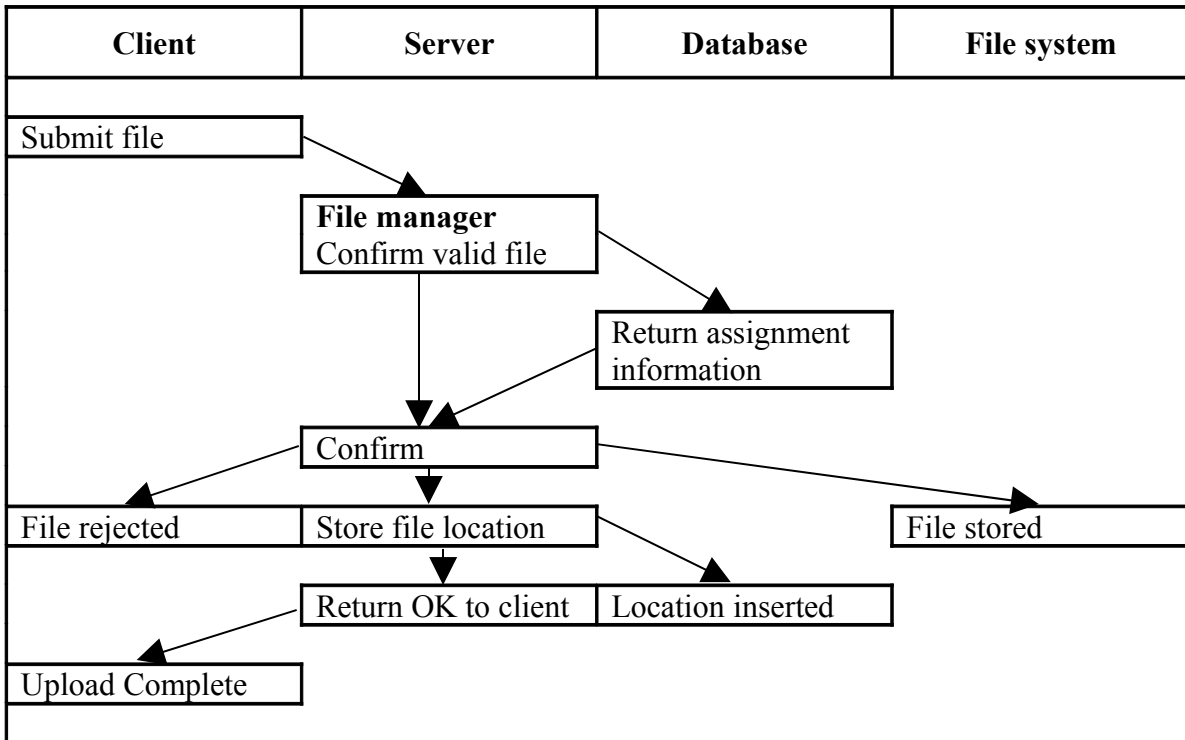
2.2 Overall architecture

The system is divided into four main parts that control the control and data flow as shown below. Since both files and data are stored within the system, a file system and a database will be needed.

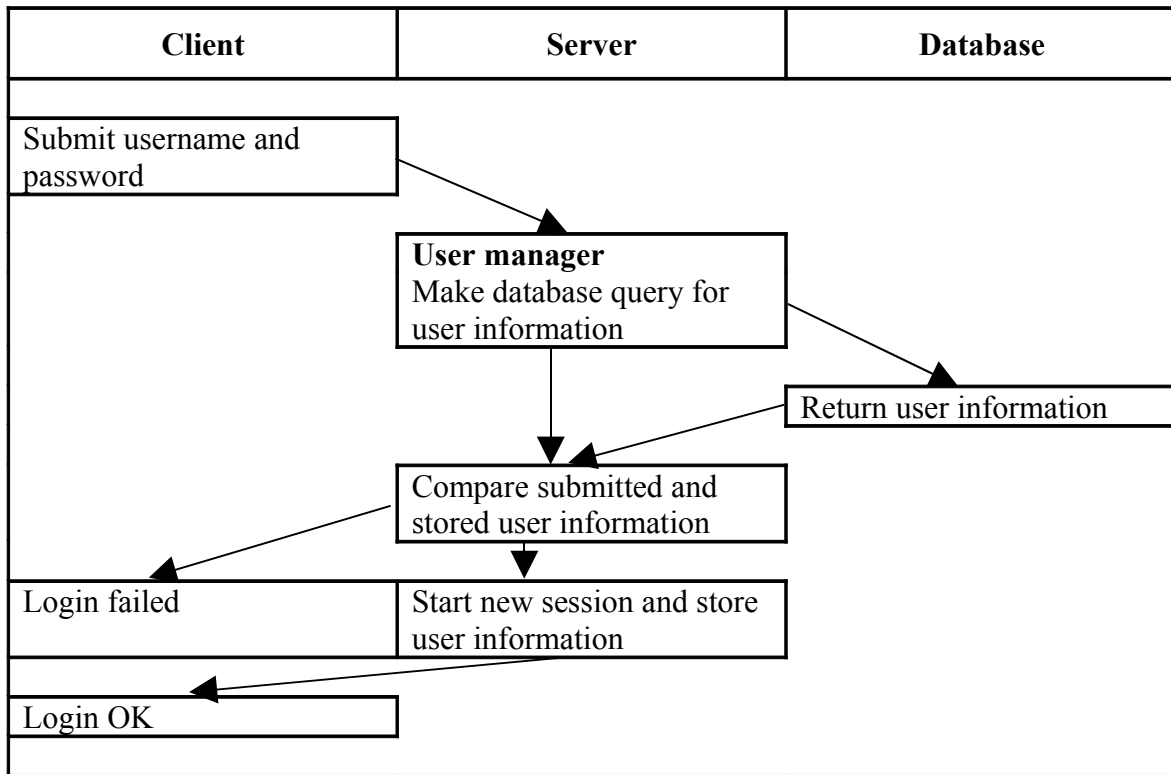


2.3 Detailed Architecture

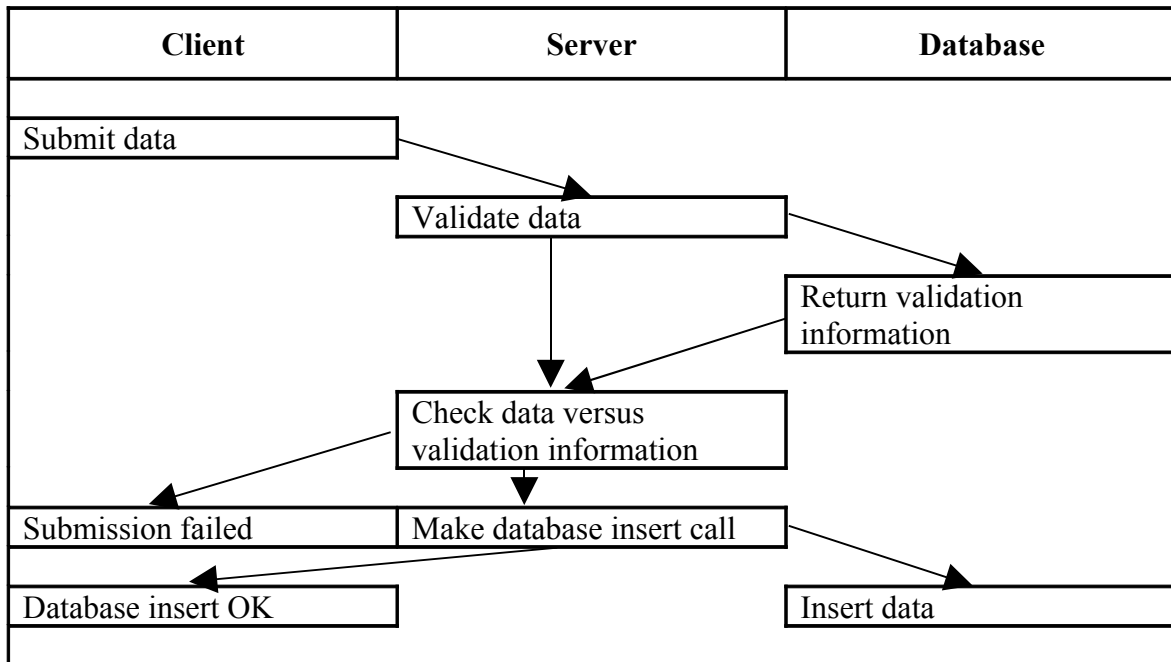
2.3.1 File submission



2.3.2 Login attempt



2.3.3 Insert data (Users, courses, assignments)



2.3.4 Regular usage

